

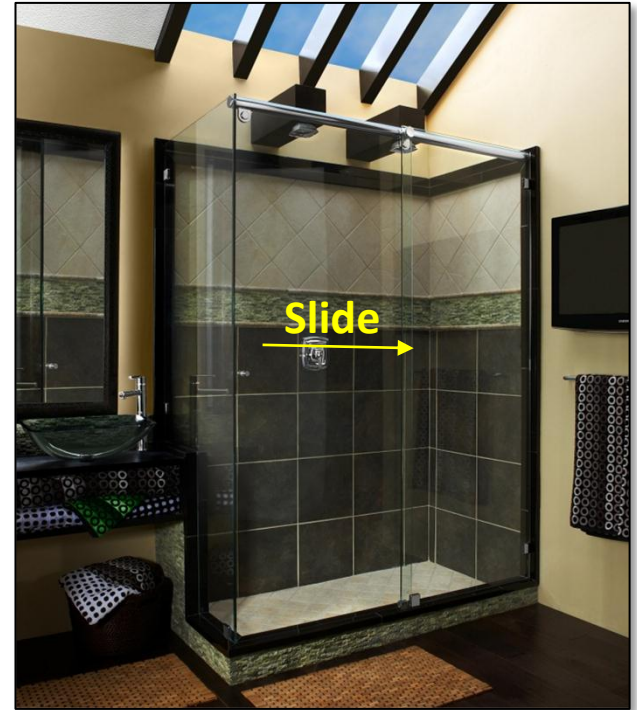
# *Water.Fall*

## bath enclosures



WaterSlide may be installed in smaller bathrooms where obstructions inhibit the operation of a conventional swing door.

WaterSlide offers Homeowners a unique alternative to conventional hinged or pivoting Heavy Glass Doors. WaterSlide is designed to be used exclusively with 3/8" Glass.



WaterSlide may be installed with the Sliding Panel adjacent to a Return Panel...

...or with the Sliding Panel next to the wall for easy access to the Shower Controls.



Roller Assembly – 2 Required



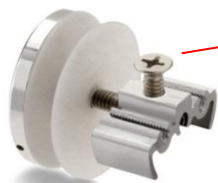
Drill Guide used to locate holes in Header for Side Attach Assembly



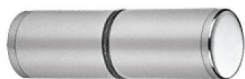
Wall Mount Bracket



Side Attach Assembly – 2 Required



End Attach Assembly



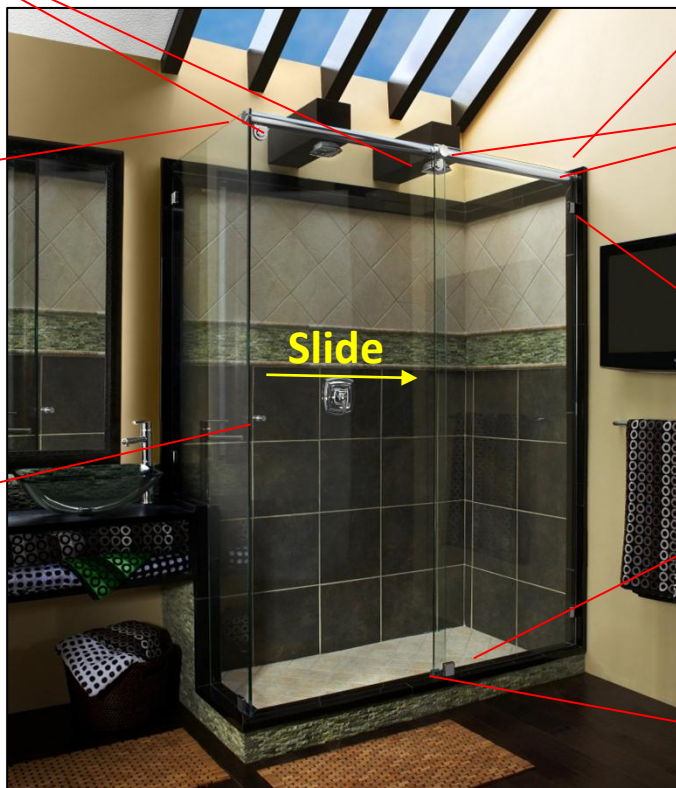
Finger Pull  
(Other Hardware May Be Substituted)



Wall Clips



Bottom Guide Assembly



This Instruction Manual will detail the step-by-step procedures required to install this WaterSlide with a Return Panel adjacent to the Sliding Panel. Doors shown on the previous page are installed in a similar manner. WaterSlide hardware is conveniently packaged in Assemblies, note the assemblies used to install this door.

### Tools Required:

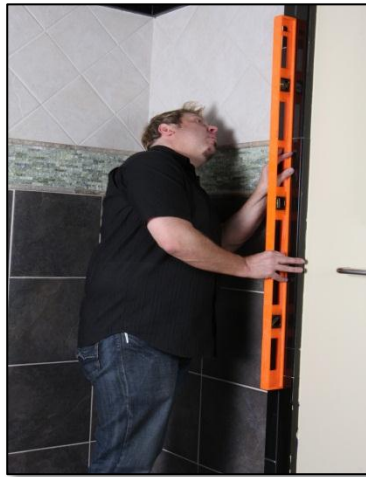
Tape Measure & Level  
Drill With 3/16", 9/32" & 1/4" Bits  
Phillips Screw Driver  
Saw (To Cut Header to Length)  
1.5mm & 3mm Allen Wrenches  
Caulking Gun & Clear Sealant



# 1.



Measure the centerline of the unit and check all surfaces for plumb & level. Use the WaterSlide Detail Sheets to determine glass sizes and hardware required. Detail sheets are included at the end of this document.



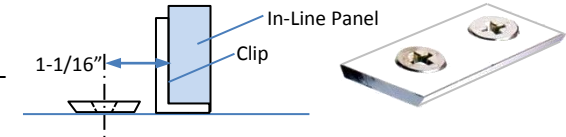
# 3.



Before installing the Fixed Panel, mount the Dovetail Retainer for the Bottom Guide  $1\text{-}1/16''$  inches from the inside of the In-Line Panel



Place the Door inside the shower.



# 2.



Install the Return Panel on the centerline of the Curb.



Note the Inside Surface of the In-Line Panel lines up with the end of the Return Panel.

# 4.



Install the Fixed Panel.

Note the Clip at the top of the Fixed Panel is optional. However, the Header is easier to install with the panel held securely in place.



Make sure the Return Panel is plumb....



...and measure from the Return Panel to the wall. Cut the Header to this dimension.



Drill a 1/4" Diameter Hole 7/16" from the end of the header



Install the End Attach Bracket with the 3/16"x1/4" screw.



Measure from the wall to the centerline of the holes in the top of the panel.



Transfer these dimensions to the face of the header and use the drill guide to drill 9/32" Diameter Holes.



Insert the Wall Mounting Bracket into the header and tighten the set screws with a 3mm Allen wrench.



Slide the two Side Mount Retainers into the header. Line up with the holes drilled in Step 6 and secure with masking tape.



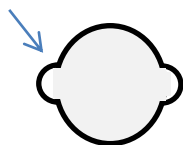
9.



Disassemble the Roller Bracket paying close attention to the orientation of the components.



Slide the Brackets into the header with the notched hole to the exterior.



11.

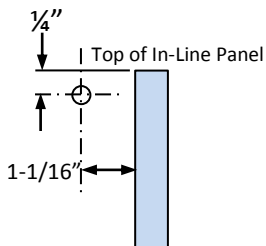


Support the header with a clamp or suction cup and attach the Header Bracket to the wall with the #8 x 1-1/2" screw.

10.



20 Deg. Angle



If using the plastic wall plug, drill a 3/16" Dia. Hole in the wall to attach the Wall Mount Bracket. If not using the plug, drill a 1/8" hole. Drill the hole at a 20 Deg. Angle.

12.



Use the End Attach Bracket to secure the header to the fixed panel. Tighten with the Spanner Wrench



# 13.



Insert the Spacer and Washer for the Side Attach Brackets between the Fixed Panel and the Header.



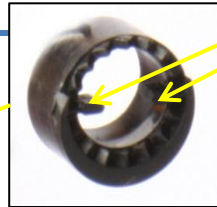
Thread the Cap Screw into the Retainers installed in Step 8 and tighten with the Spanner Wrench. Repeat for the remaining Side Attach Bracket.

# 15.



Place the washer over the Interior Cap Screw and insert into the Elliptical Spacer. Be sure the slots in the Cap Screw engage the tabs on the Spacer.

# 14.



Move the Door into position and support with two ½" blocks or wooden shims. Insert the Elliptical Spacer into the hole in the top of the glass with the serrated face to the exterior. Slide the Roller Bracket over the glass and line up with the Elliptical Spacer.

# 16.



Insert the Serrated Washer on the outside of the Bracket. Be sure the tabs on the Washer lock into the notches in the Bracket.

Hand-tighten the Exterior Cap Screw into the Interior Cap Screw. Repeat for the remaining Bracket.



# 17.



Check the door for alignment with the return panel. To adjust, place a Spanner Wrench on both the Interior and Exterior Cap Screws. Loosen the Exterior Screw slightly and rotate the Interior Cap screw to move the corner of the Door up or down to align with the Return Panel. If necessary, repeat for the remaining bracket. Once the adjustment is correct, tighten the Exterior Cap Screws with the Spanner Wrench.

# 19.



Attach the Finger Pull.



# 18.



Slide the Bottom Guide over the Dovetail Retainer installed in Step 3. Tighten the Set Screw with a 1.5mm Allen Wrench

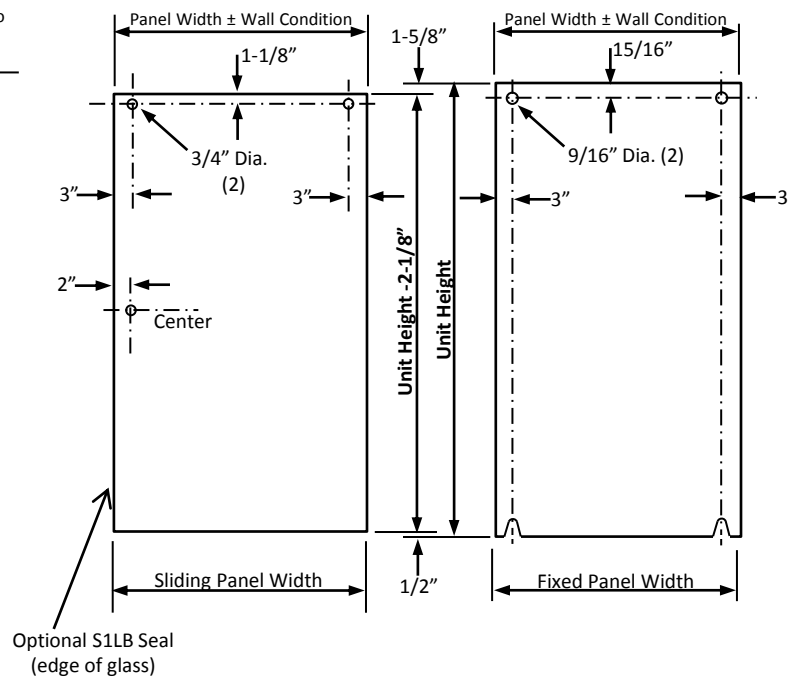
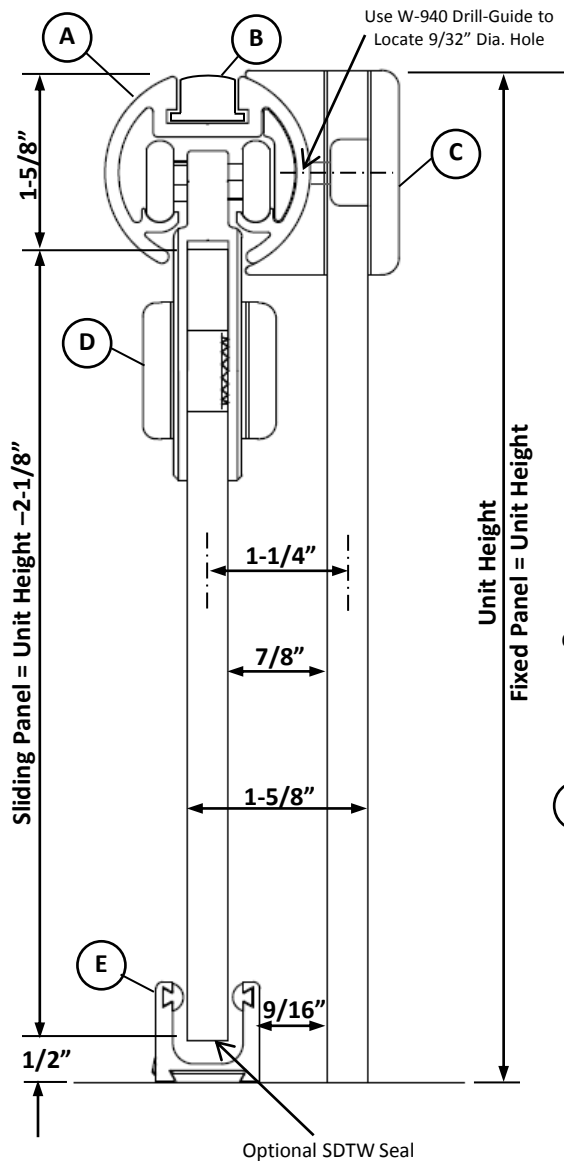


# 20.

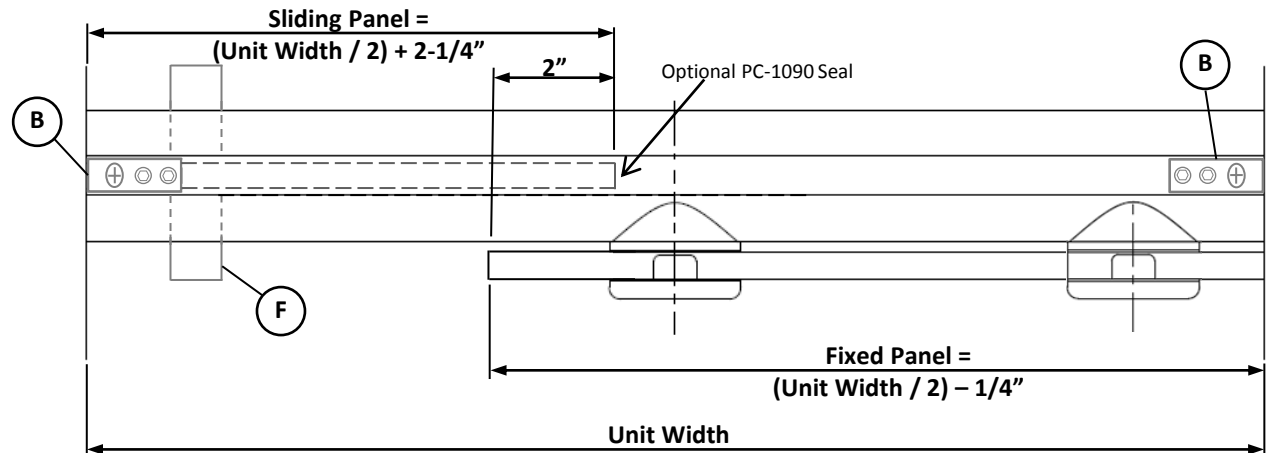
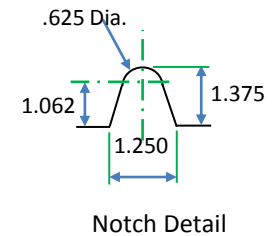
Apply a thin bead of Clear Silicone Sealant around the edges of the Fixed Panel and Return Panel.

Refer to the WaterSlide Detail Sheets for optional Polycarbonate Seals which may be installed on the Sliding Panel. Waterfall recommends you install a S1LB Seal on the leading edge of the Sliding Panel to avoid glass-to-glass contact with the return panel or wall.

Clean your WaterSlide with a mild non-abrasive cleaner with a neutral PH.



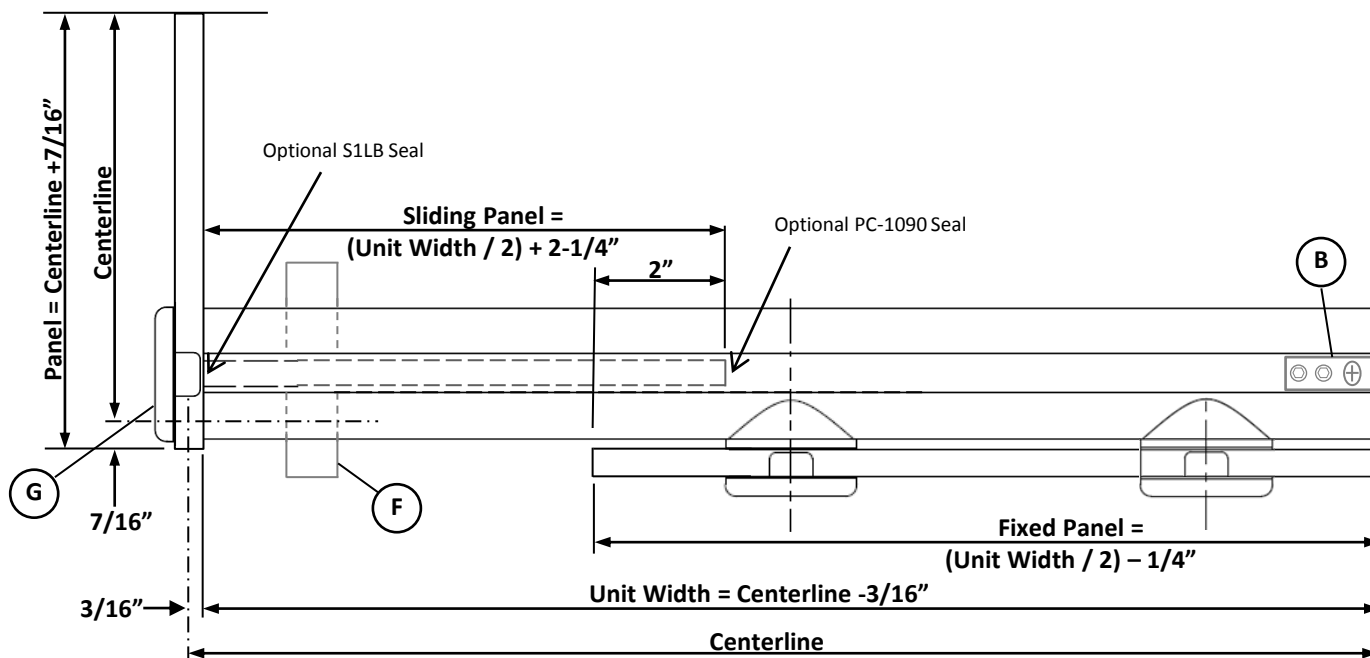
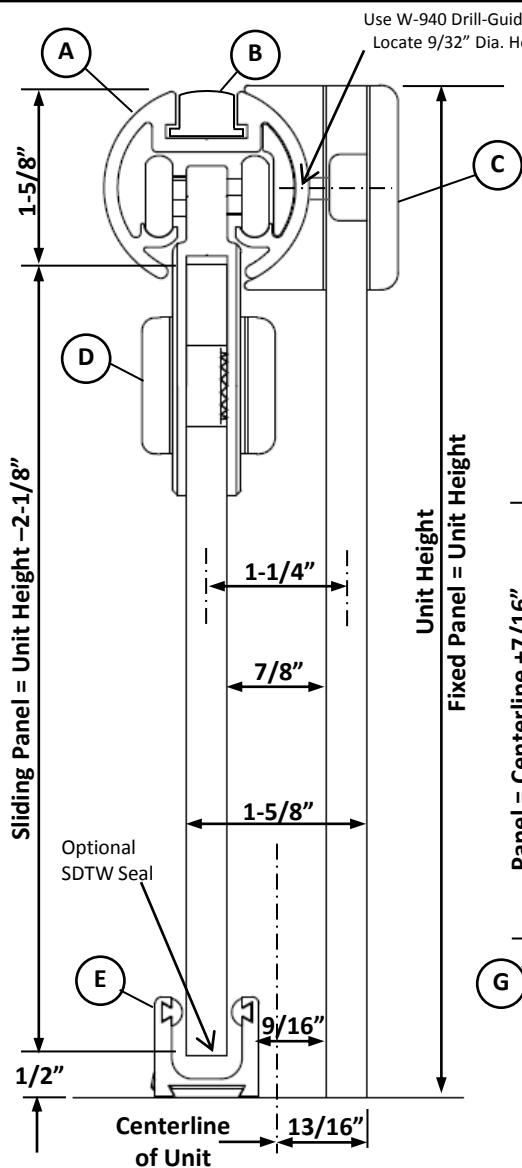
	Description	Req.
A	W-937 Header	1
B	WB-1 Wall Mounting Bracket	2
C	HD-4067 Side Attachment Assembly	2
D	WA-938 Hanger Bracket Set of 2	2
E	WA-941 Bottom Guide Assembly	1
F	DK-112 Pull	1



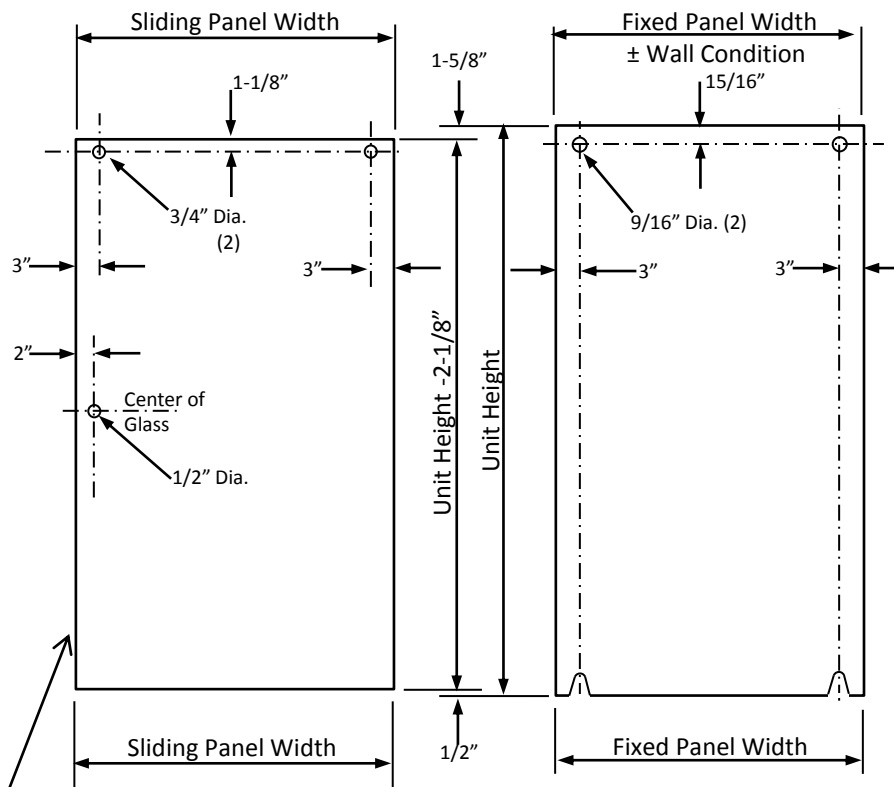
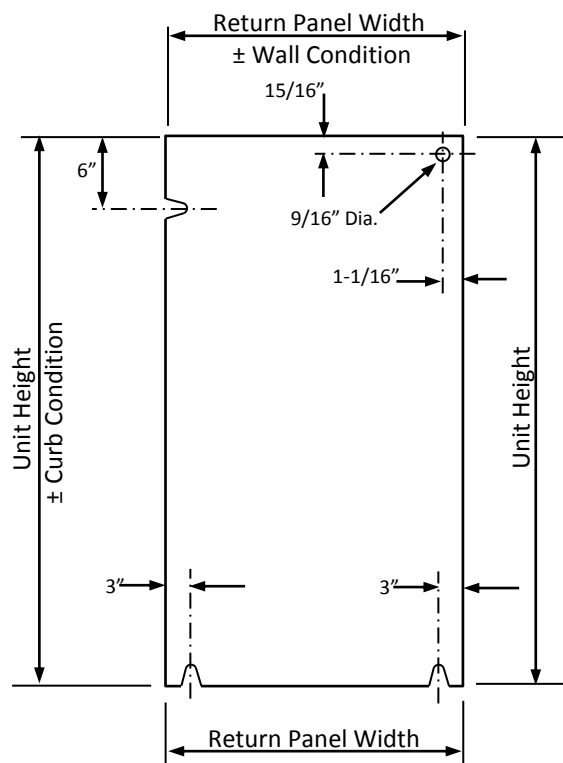


# Heavy-Glass Sliding Door

With Fixed Panel Adjacent to Wall



	Description	Req.
A	W-937 Header	1
B	WB-1 Wall Mounting Bracket	1
C	HD-4067 Side Attachment Assembly	2
D	WA-938 Roller Bracket Set of 2	1
E	WA-941 Bottom Guide Assembly	1
F	DK-112 Pull	1
G	HD-4071 End Attachment Assembly	1



Optional S1LB Seal (edge of glass)

