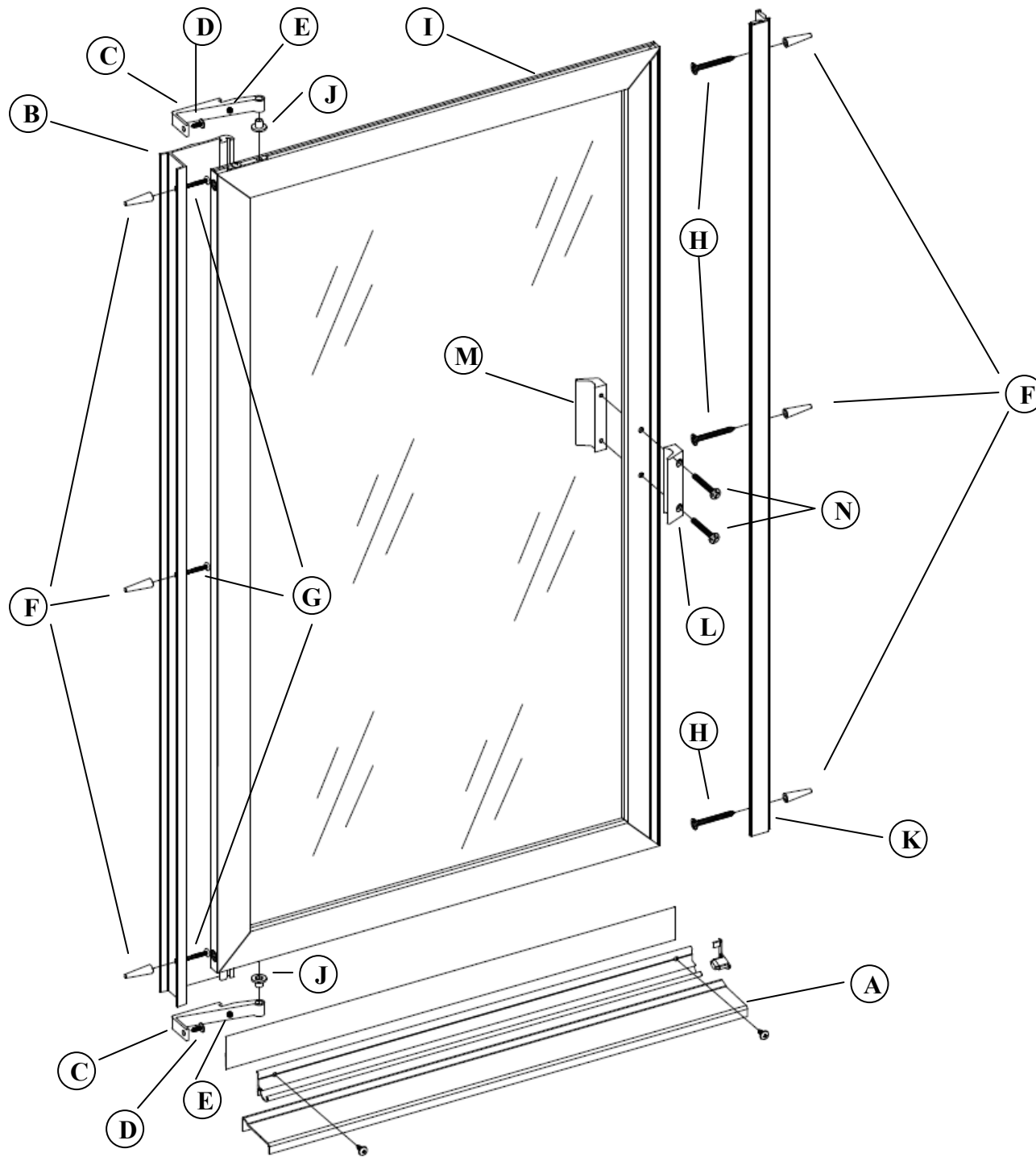


Water Fall bath enclosures

Model 73 Framed Pivot Door Installation Instructions



Installation Tools Required: Tape Measure, Masking Tape, Level, #2 Phillips Screwdriver, 3/16" Wrench, 5/64" Allen Wrench, Drill with 1/8", 7/64" and 3/16" bits, hacksaw, pencil, clear silicone caulking. Optional: Miter Box, File and Center-Punch.

NOTE:
See Standard Drip Rail Installation Instruction or Adjustable Drip Rail Installation Instruction for alternative drip installations.

1 The Model 73 Framed Pivot Door is reversible and may be installed pivot-right or pivot-left. Use the diagram at right to determine the correct position for your installation. For maximum waterproofing the pivot jamb should always be opposite the shower head. These instructions depict a pivot-right installation.

3 Run two beads of caulk inside the pencil marks on the sill. Place the curb [A] in the exact position marked in step #2 and press it firmly into the caulking. Also caulk where the ends of the curb meet the walls. Hold curb in place with masking tape.

NOTE: Improper caulking will result in leaks.

2 The Model 73 may be installed without the sloped curb, however use of the curb is recommended for proper water control on sills with little or no slope.

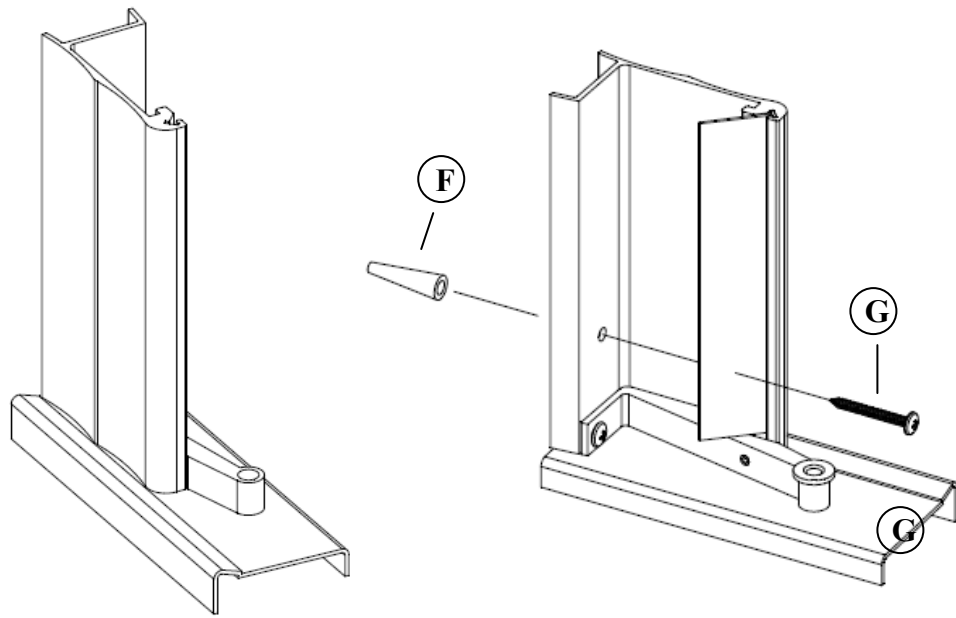
Measure the wall-to-wall opening at the shower sill and cut the curb to the exact length. If necessary file the ends of the curb to fit rounded corners of the enclosure. Place the curb on the sill with the **RAISED** portion to the exterior of the enclosure. Center the curb on the sill and mark its position on the sill with a pencil. Remove the curb from the sill.

4 Cut the jamb wiper vinyl 7/8" shorter than the pivot jamb [B] to allow room for the pivot brackets [C]. Fit one of the pivot brackets into the bottom of the pivot jamb. Secure it in place with a #6 x 3/6" truss head screw [D] and tighten the #8-32 x 1/8" set screw [E] with a 5/64" Allen wrench.

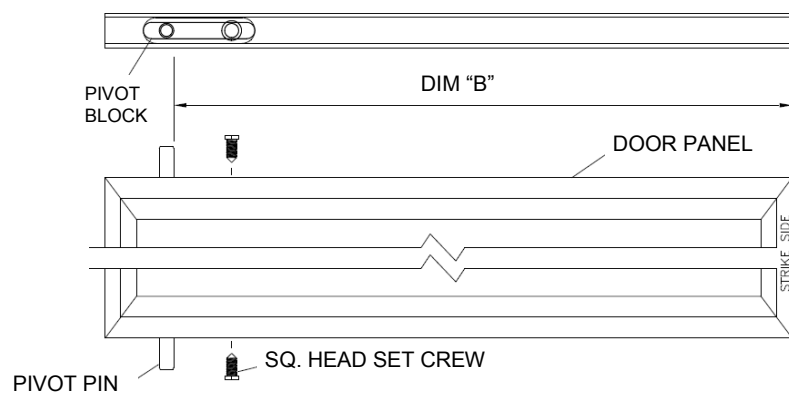
5 Place the pivot jamb [C] on the curb [A] with the exterior face aligned with the raised edge of the curb. Plumb the jamb with a level and mark the mounting hole locations. Remove the jamb and drill the mounting holes.

For tile or marble walls, drill three 7/32" diameter holes and insert the plastic wall anchors [F]. A center punch helps locate the holes accurately. Attachments to fiberglass or acrylic units can be made in two ways. If reinforcement is built into the wall, drill three 1/8" diameter holes to install the mounting screws directly into the reinforcement. If there is no reinforcement, drill 7/32" holes and install plastic wall anchors or Molly bolts (not supplied).

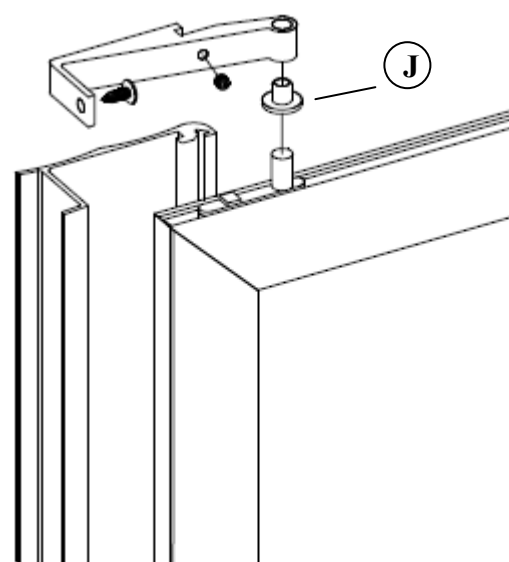
Replace the pivot jamb and attach to the wall with three #8 x 2" truss head screws [G].



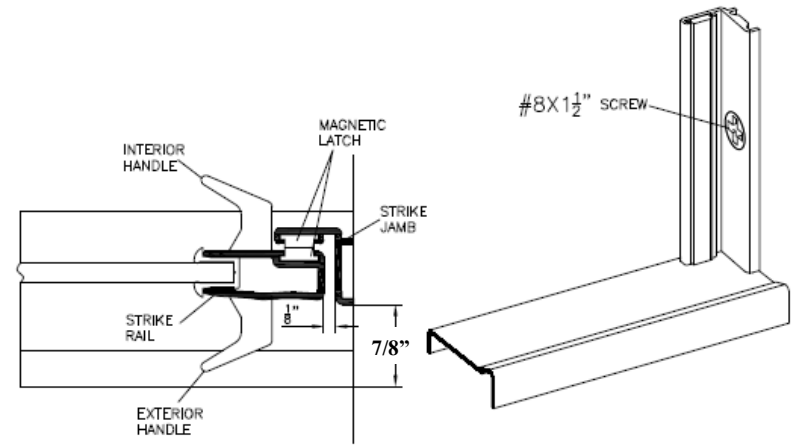
6 Using the wall to wall measurement determined in Step #2 deduct 3 13/16" from that measurement and position the pivot pins this exact distance (Dim. "B") from the edge of the door panel [I]. Tighten the square head set screws just enough to prevent the pivot blocks from moving (finger tight plus one quarter turn). A 3/16" wrench will fit the screw heads.



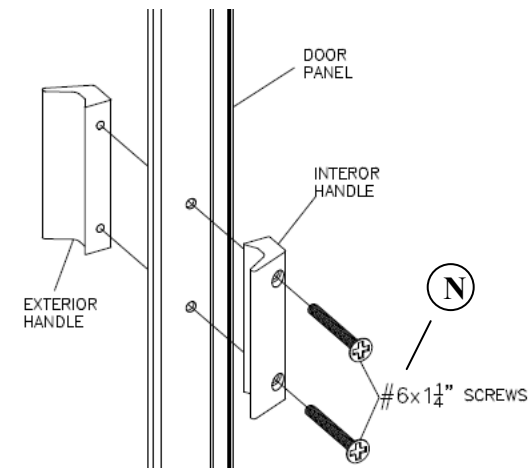
7 Insert a nylon pivot bushing [J] into the bottom pivot bracket [C]. Place the second pivot bushing over the top pivot pin. Position the door by inserting the bottom pivot into the bottom pivot bracket. Hold the door vertical and slide the top pivot bracket onto the pivot bushing. Secure the top pivot bracket with a #6 x 3/8" truss head screw [D] and a #8-32 x 1/8" Allen set screw [E].



8 Your pivot door is equipped with a magnetic catch. Attach the strike jamb [K]. Close the door so the strike jamb is 7/8" from the front of the curb [A] and mark the jamb location on the wall. If the curb is not used, close the door parallel to the shower sill and mark the jamb location. Remove the strike jamb from the door panel, hold it in the marked location with masking tape and mark the hole locations for the mounting screws. Drill the mounting holes per the instructions in Step #5. Replace the strike jamb and attach it to the wall with three #8 x 1 1/2" flat head screws [H].



9 Attach the interior door handle [L] and the exterior door handle [M] to the door with two #6-32 x 1 1/4" round head screws [N].



For drip rail installation refer to separate instruction sheets Adjustable Drip Installation or Standard Drip Installation.

Neatly caulk the inside perimeter of the shower curb and wall jambs.
Note: Allow 24 hours for caulk to cure before using your shower.

Clean your new Waterfall Enclosures with a soft cloth and a non-abrasive cleaner with a neutral Ph. Do not use acid based cleaners, vinegar or scouring pads to clean your unit.